

**SOMERSET  
HOUSE** step inside think outside

# FILMING AT SOMERSET HOUSE

## A LEADING LOCATION IN THE HEART OF LONDON

*'We really did have a great time filming at Somerset House, the material that I have seen from the day, really does look stunning! Thank you for all your time and understanding in the build up, with all our fluidity, and your help and understanding for the preparation and filming, you really did make things go smoothly for us on the day.'* - Location Manager





# THE HOME OF CULTURAL INNOVATORS

Home to the UK's largest creative community, working globally across art, technology, business and social enterprise, we draw fresh ideas and new talent in, attracting over 3 million visitors a year to our historic central London location.

Run as an independent charity by the Somerset House Trust, all income directly contributes to our diverse cultural programme, pioneering engagement & skills work, supports emerging artists and helps to maintain our historic, Grade I listed site.

## WE HAVE:

- Elegant blank canvas rooms
- Sweeping staircases
- Atmospheric lightwells
- Picturesque terraces
- A spectacular courtyard
- A series of commanding rooftops

and all manner of interesting, lesser-known spaces...

Our flexibility and ability to source spaces on-site, featuring both the historic and the contemporary, means we are always likely to have a location to raise the bar for your brief.



# AN ICONIC YET VERSATILE BACKDROP FOR MAJOR FILM SHOOTS AND TELEVISION SERIES

*'I thoroughly enjoyed filming at Somerset House. A gem of a place and your team were all great. Very professional, personable and understanding of us. Thank you so much for allowing us in and for all your hard work, enabling a successful shoot in a fantastic location.'*

– Location Manager



**SOMERSET HOUSE ON SCREEN**



**STRICTLY COME DANCING**



**GLORIOUS 39**



**LONDON HAS FALLEN**



**X-MEN: FIRST CLASS**



**H&M**



**LOVE ACTUALLY**



**BRIDE AND PREJUDICE**



**SUFFRAGETTE**



**THE DUCHESS**



SOMERSET HOUSE ON SCREEN



NAPOLEON



OPERATION MINCEMEAT



THE ESSEX SERPENT

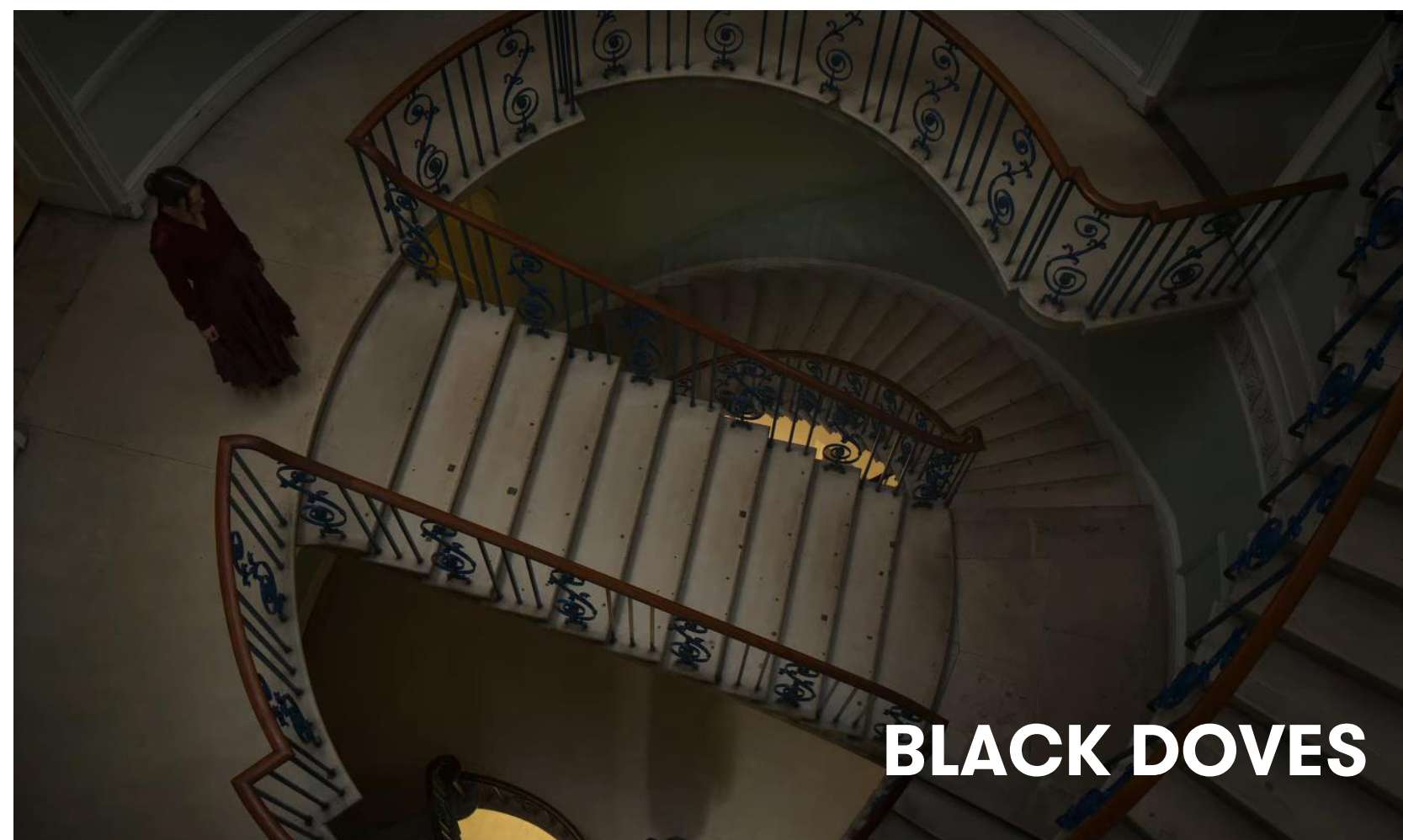




**SOMERSET HOUSE ON SCREEN**



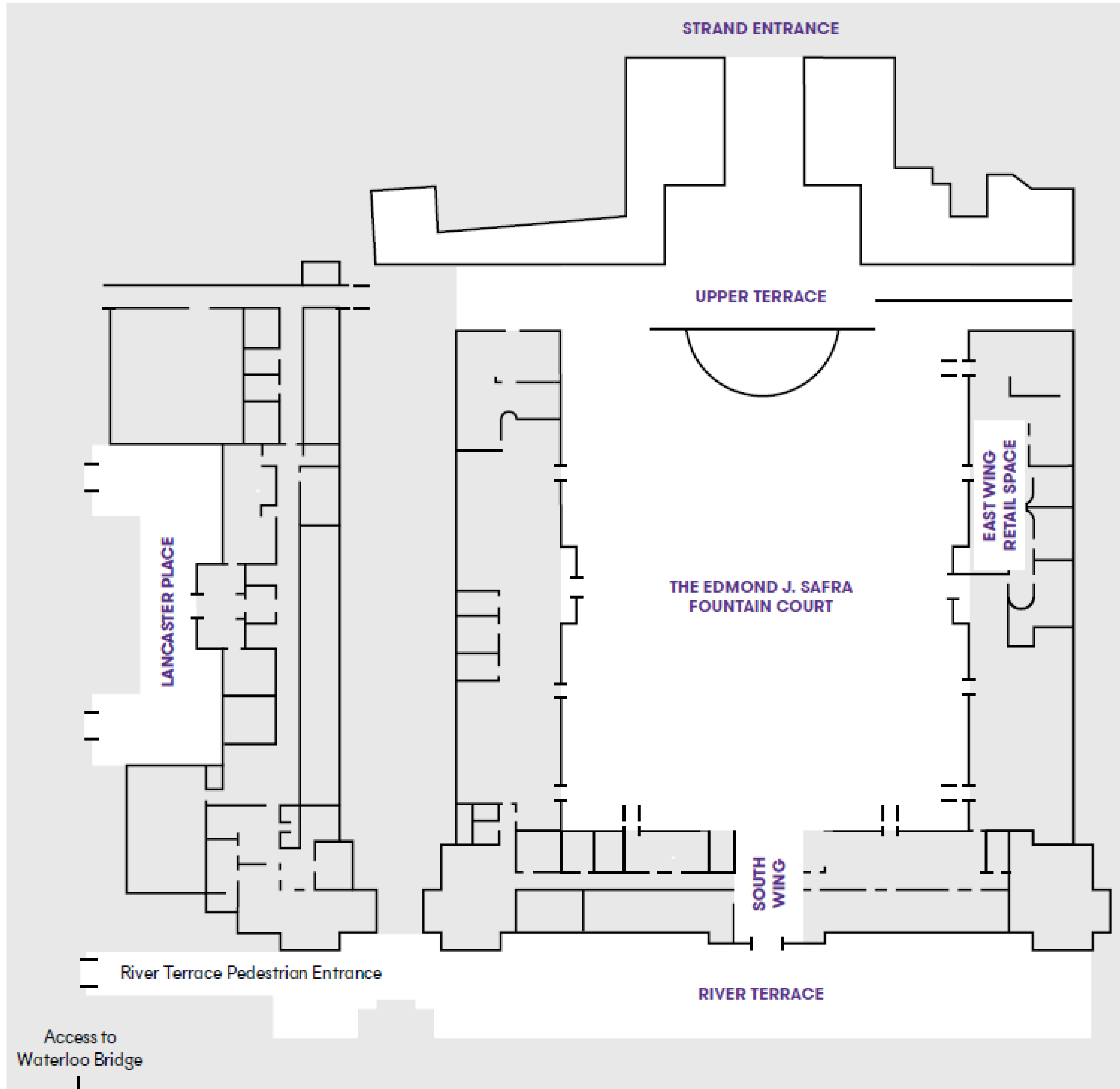
**SOMERSET HOUSE ON SCREEN**







# OUR EXTERNAL LOCATIONS





# EDMOND J. SAFRA FOUNTAIN COURT

With its neoclassical backdrop, this cobbled area, centred around the iconic fountains and surrounded by glorious 18th century architecture, is one of the grandest locations in central London that can be easily transformed.





# UPPER TERRACE

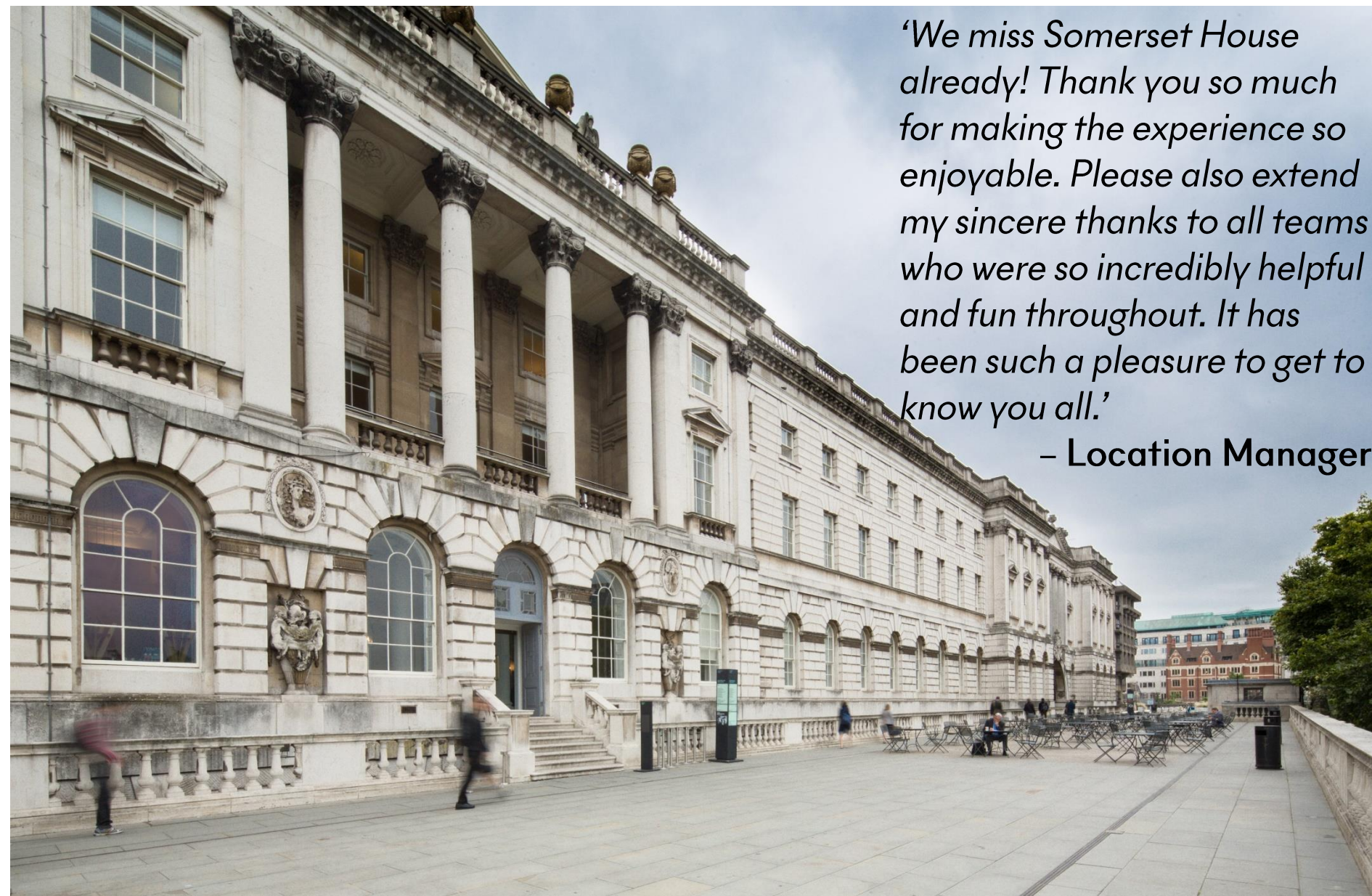
A firm favourite, with beautiful archways and a cobbled walkway which stretches for more than 100 metres.





# RIVER TERRACE

Offers views of the Southbank and the River Thames, whilst also retaining the neoclassical architecture as a backdrop.



*'We miss Somerset House already! Thank you so much for making the experience so enjoyable. Please also extend my sincere thanks to all teams who were so incredibly helpful and fun throughout. It has been such a pleasure to get to know you all.'*

**- Location Manager**



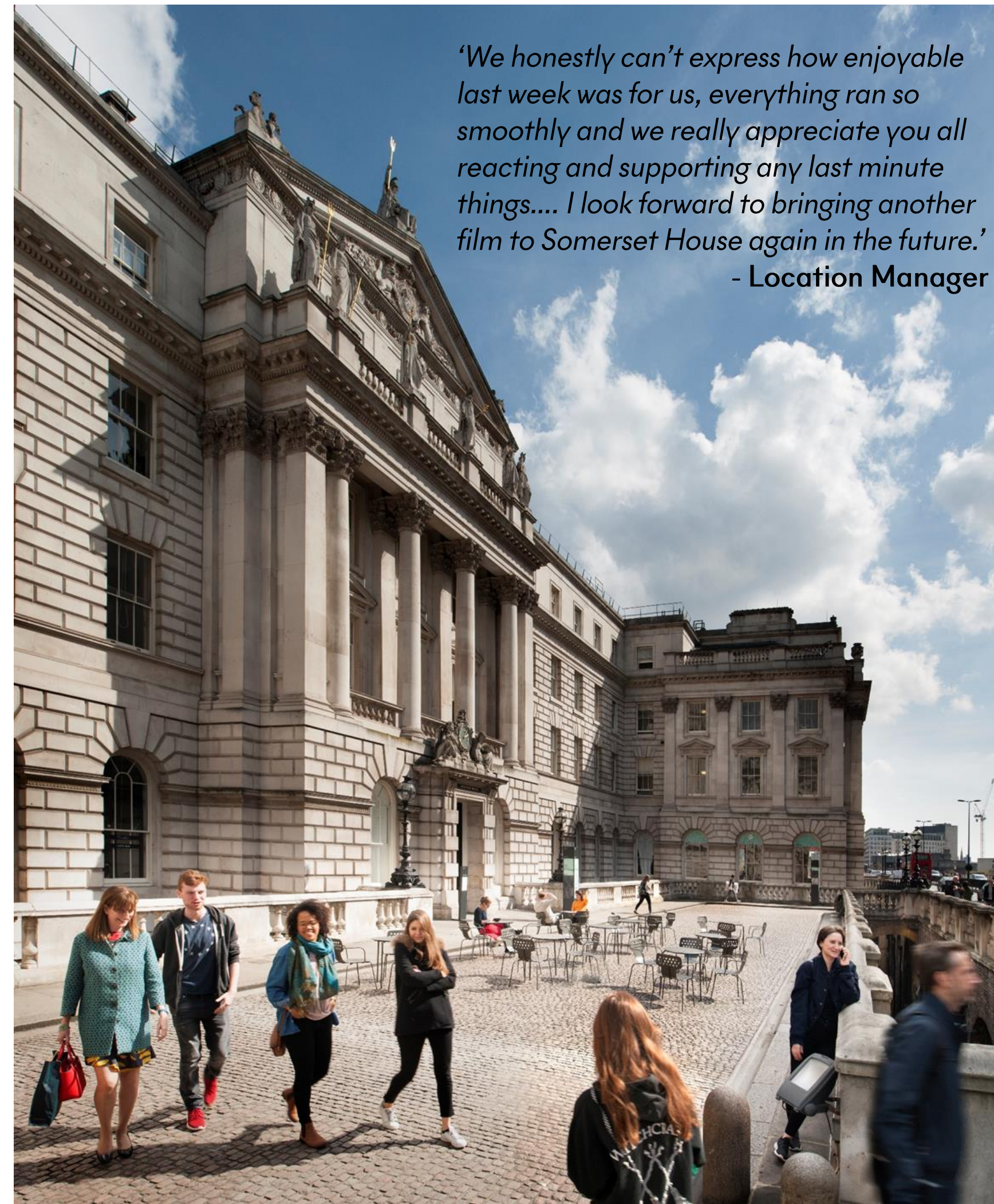


# LANCASTER PLACE

An external space situated outside our New Wing, just off Waterloo Bridge, featuring a grand entrance into the building.



*'We honestly can't express how enjoyable last week was for us, everything ran so smoothly and we really appreciate you all reacting and supporting any last minute things.... I look forward to bringing another film to Somerset House again in the future.'*  
- Location Manager





# MAKERSTREET

Situated underneath Waterloo Bridge, and with camera positions from Lancaster Place, Maker Street is ideal for street scenes. Vaulted studios can also be transformed and used as a location.

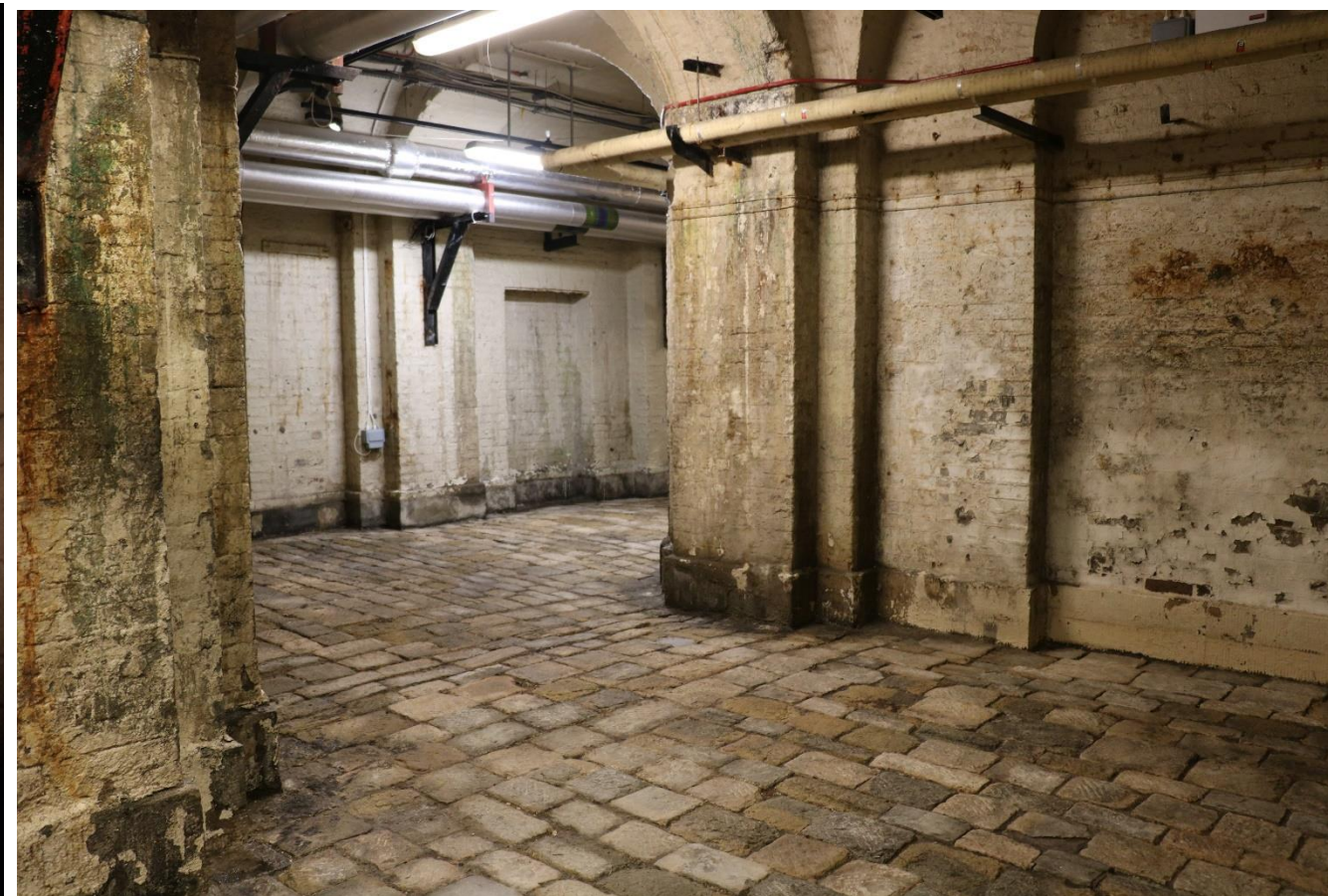




# LIGHTWELLS & DEADHOUSE

One level below our fountains, running along three sides of the courtyard, are the lightwells - a long-time favourite, with its unique architecture, unexpected hidden depths and an abundance of secret nooks and crannies.

The Deadhouse, meanwhile, is an underground tunnel which runs directly beneath the courtyard, with eerie memorials set into the walls. A versatile space without the need for large amounts of production.





# ROOFTOPS

From our commanding series of rooftops, you'll find the perfect shot of the London skyline, with views across the city, Waterloo Bridge and River Thames - taking in the Southbank, the London Eye, with Westminster to the East, and St. Paul's Cathedral to the West. Ideal for high level shots, camera positions, stunts and chase scenes.

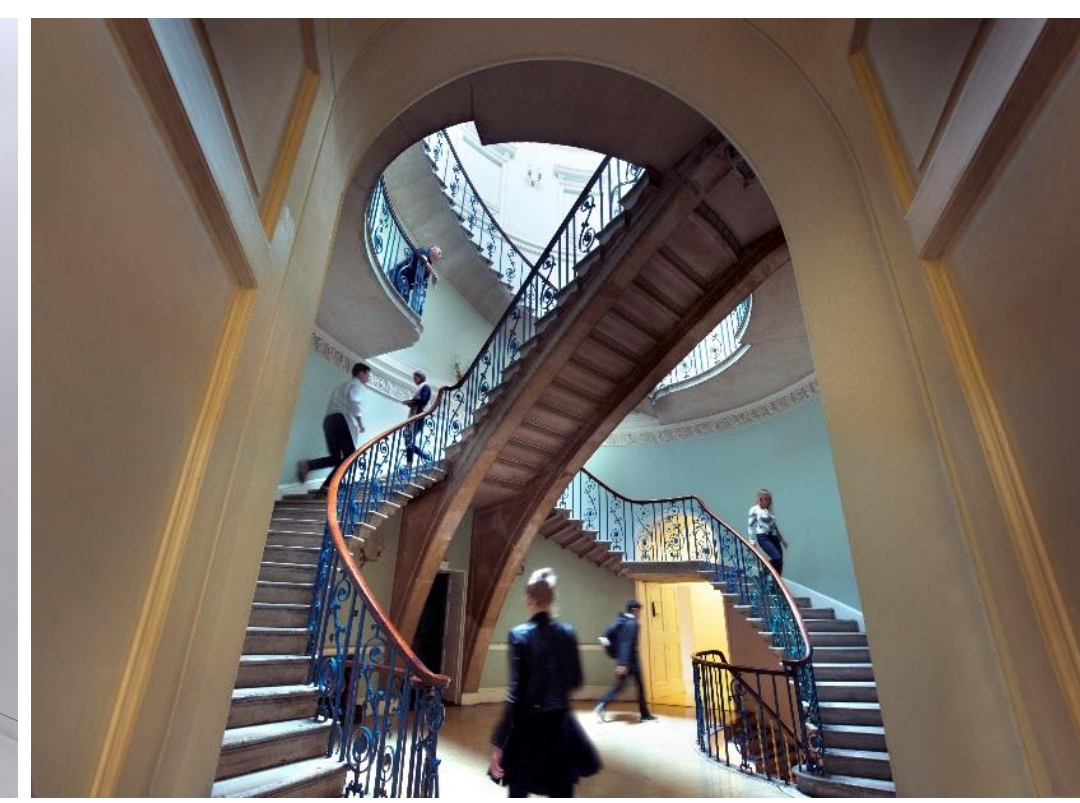
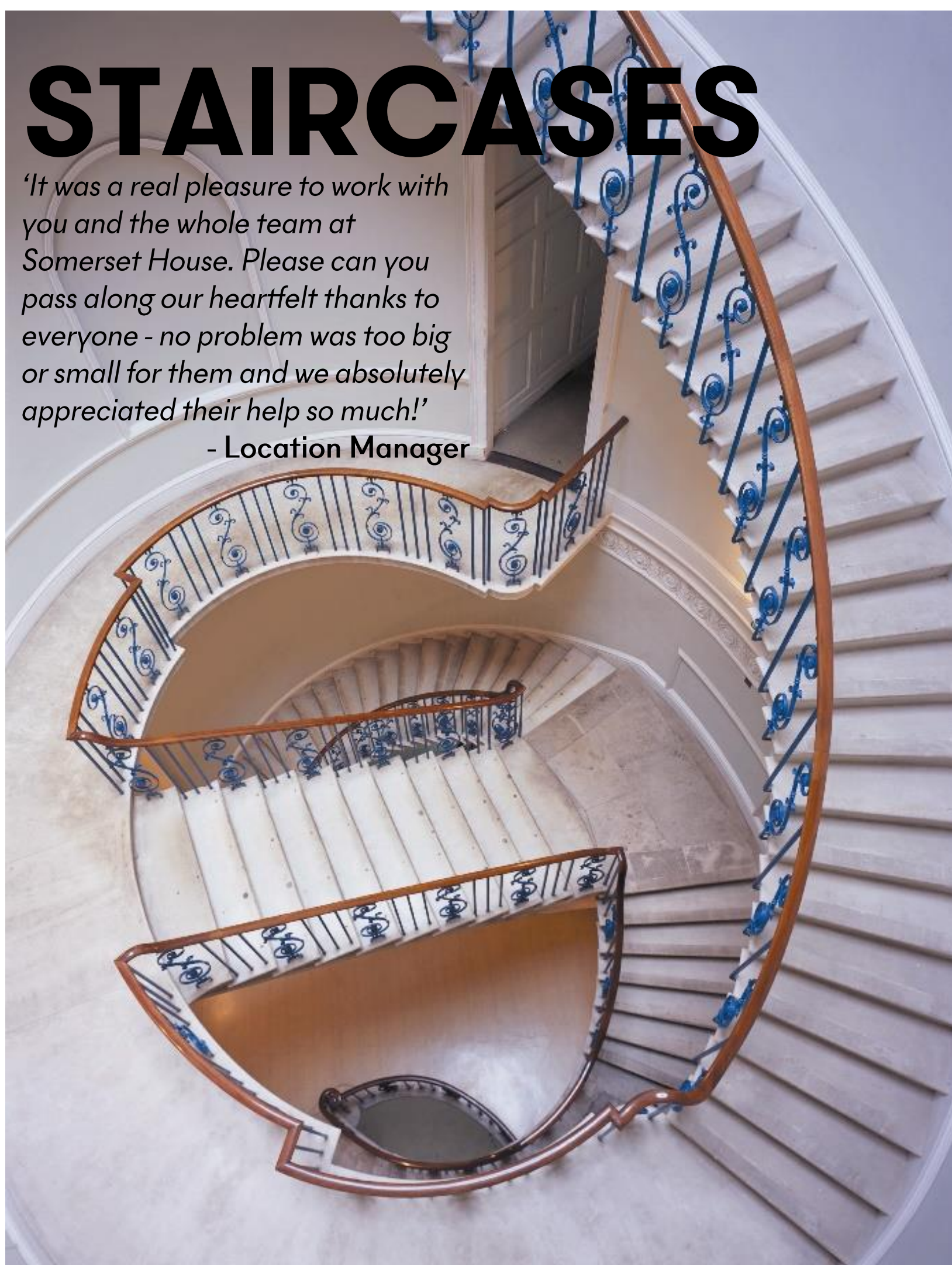




# STAIRCASES

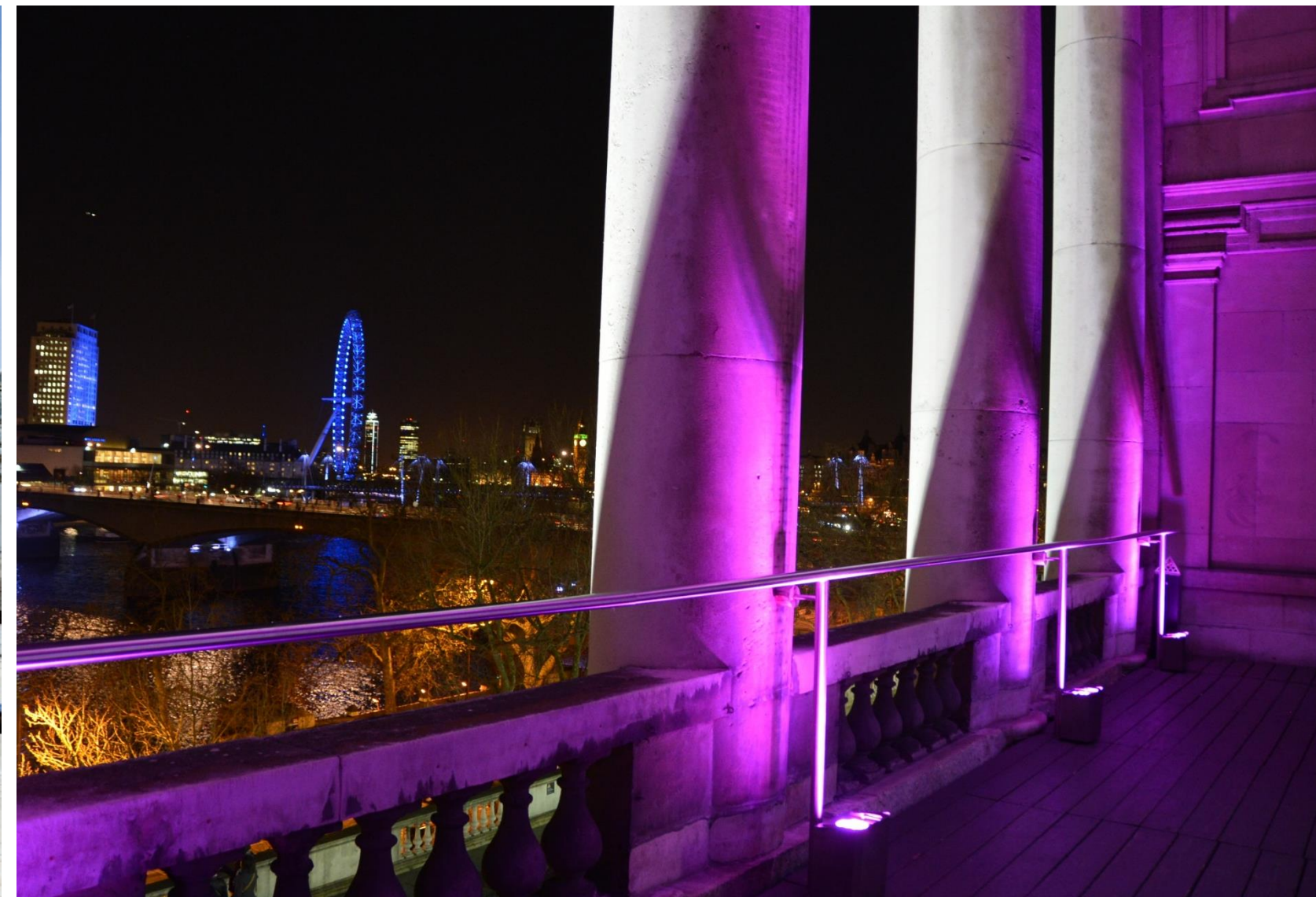
*'It was a real pleasure to work with you and the whole team at Somerset House. Please can you pass along our heartfelt thanks to everyone - no problem was too big or small for them and we absolutely appreciated their help so much!'*

**- Location Manager**





# BALCONIES





# INTERNAL LOCATIONS

## PORTICO ROOMS

Features two balconies, one offering views of the River Thames, Waterloo Bridge and the Southbank, and the other of our iconic Edmond J. Safra Fountain Court.

## NAVY BOARD ROOMS

One of our most traditional spaces, with grand chandeliers and marble backed fireplaces.

## SEAMEN'S HALL

Connected to the River Terrace, this room offers a sense of grandeur with its chandeliers, dramatic pillars, stone floors and large windows. (this space acts as our daytime reception, exclusive access only available after 18:00).

## LANCASTER ROOM & RIVER ROOMS

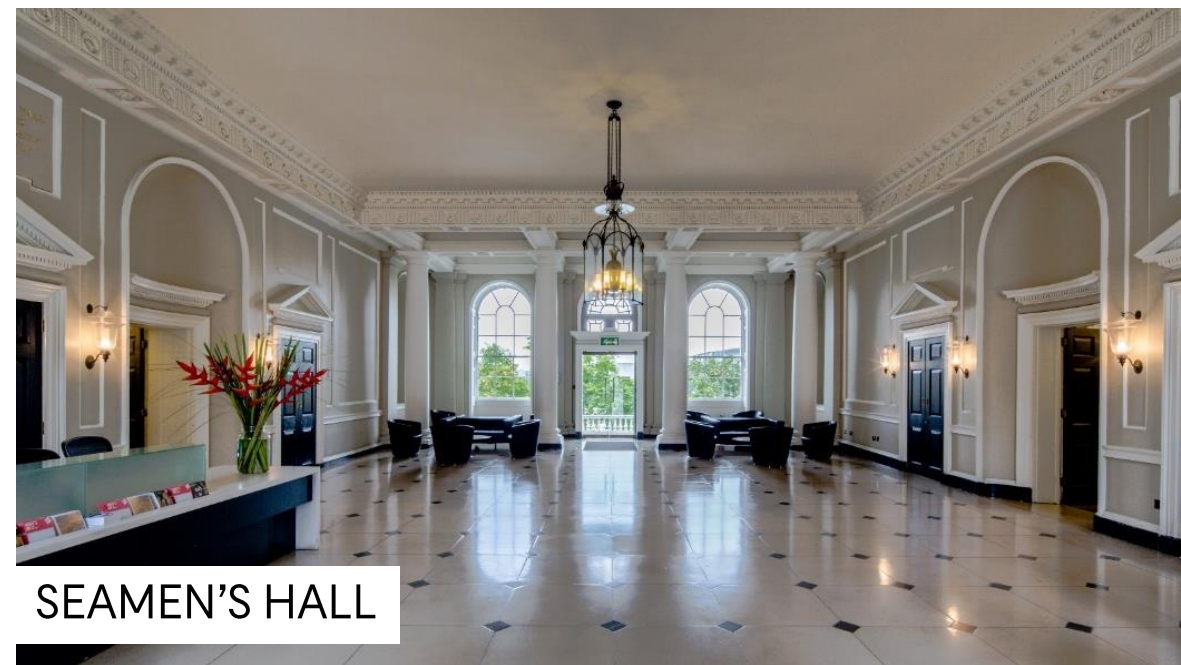
A versatile suite of rooms with a creative and raw aesthetic, featuring dramatic pillars, high ceilings and exposed floorboards - set against the stunning views of the Thames. This room takes the original features of Somerset House and adds a contemporary cutting edge. The interlinking, open plan rooms have custom-built lighting tracks, complete with dramatic original fireplaces and exposed brick archways.

## EAST AND WEST WINGS

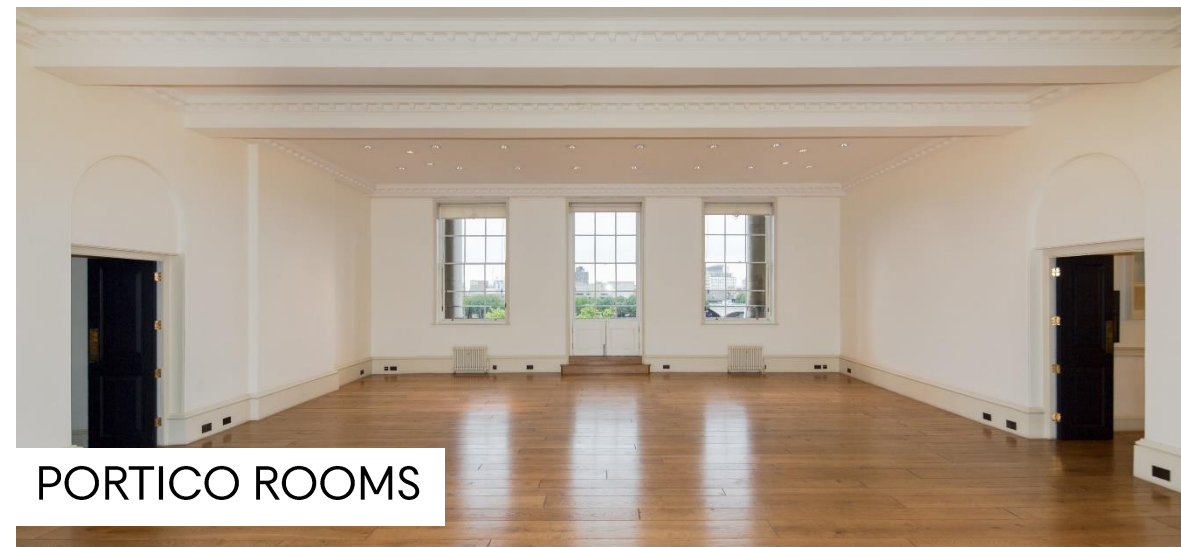
With feature fireplaces, long corridors, wooden floors and large sash windows, the East and West Wings are great film or photoshoot location. They can also be used for spacious back of house spaces during shoots.



NAVY BOARD ROOMS



SEAMEN'S HALL



PORTICO ROOMS



LANCASTER ROOMS



RIVER ROOMS

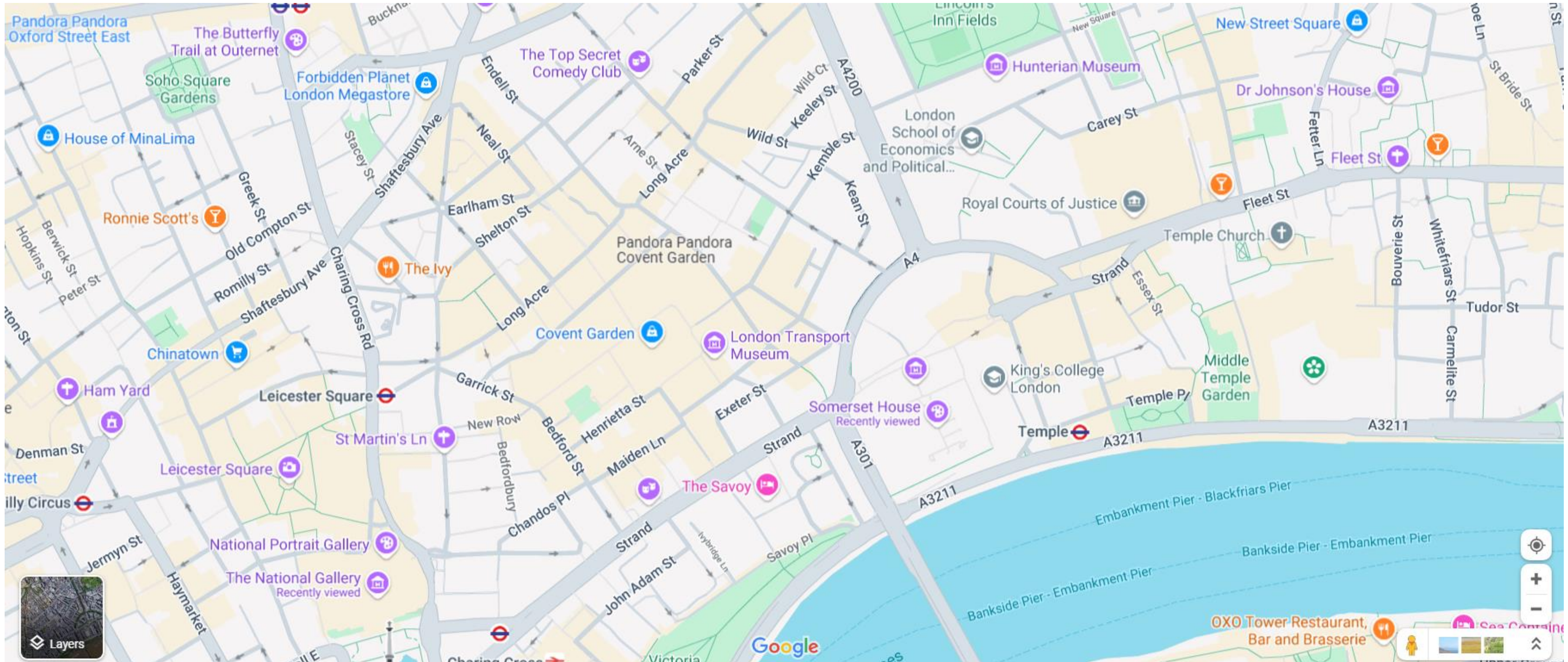


WEST WING

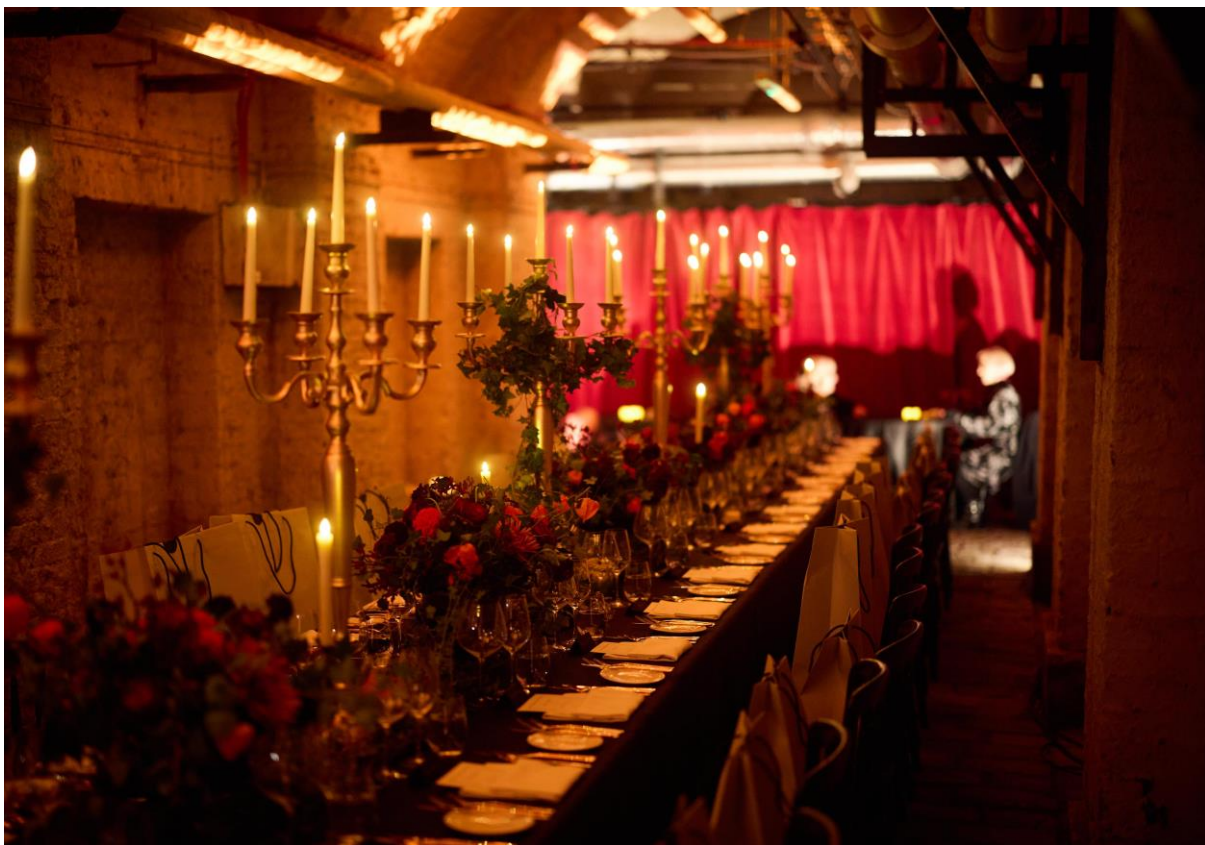


# BACK OF HOUSE / VIDEO VILLAGES

Even if you are not filming at Somerset House, our well-connected central location means that we are well situated to host your production teams, cast and crew – whether its catering space, back of house, storage, green rooms or for your video village. We offer reduced rates for these elements and are very happy to accommodate!









## DIVERSITY & INCLUSION

We are committed to building a diverse and inclusive community reflecting the diversity of our society. A community where everyone feels valued, where their contribution matters and where they can reach their full potential, irrespective of their background, identity or circumstances. We aim to ensure the diversity of all our staff reflects our society as fully as possible. Similarly, we aim to be home to a resident community of artists and enterprises from an equally diverse range of situations, backgrounds, and disciplines. Ongoing initiatives include running the Black Business Incubator.

## ANTI-RACISM

Somerset House is committed to being actively anti-racist and publicly releases updates on the actions it is taking in relation to its Anti-Racism Pledge every six months. We recognise that this is a journey. We have divided our focus into 5 key areas: History, Community, Workforce & Recruitment, Language and Procedures & Policy. A comprehensive list of our current actions can be found [here](#).

## SUSTAINABILITY

Sustainability and responsible event management are of paramount importance to Somerset House and, by extension, our Accredited Suppliers.

You can download our sustainability booklet, outlining what we are up to at Somerset House, [here](#).

## LONDON LIVING WAGE EMPLOYER

Somerset House is proud to be an accredited Living Wage payer. We pay all our staff and sub-contractors the London Living Wage.



# SOMERSET HOUSE

## OUR BUILDING

Over **500,000**  
**SQ FT**  
of **Grade I listed architecture**

## OUR VISITORS

**OVER**  
**3 MILLION**  
**VISITORS ANNUALLY**

## CREATIVE COMMUNITY

**Creative Enterprise**

**450+**  
resident organisations

**Artists & Makers**

**400+**  
**SOMERSET HOUSE STUDIOS**

**Our Neighbours**

**THE COURTAULD and KING'S COLLEGE LONDON**

**2,500+**  
People working in the creative industries

**Somerset House Studios artists and Makerversity members**

## OUR PEOPLE

**120** **100+**  
Staff Volunteers





## CONTACT

[events@somersethouse.org.uk](mailto:events@somersethouse.org.uk)

+44 (0)20 7845 4618

[somersethouse.org.uk/venue-hire](http://somersethouse.org.uk/venue-hire)

View some of our spaces [here](#).

## LOCATION

Somerset House, Strand, London WC2R 1LA

## BY LONDON UNDERGROUND

Temple (Circle & District lines; 250m, 5 mins)

Covent Garden (Piccadilly line; 650m, 8 mins)

Charing Cross (Bakerloo & Northern lines; 700m, 10 mins)

Embankment (Circle & District lines; 700m, 10 mins)

Waterloo (Bakerloo, Waterloo & City, Jubilee & Northern lines; 800m, 11 mins)

## BY RAIL

Charing Cross (700m, 10 mins)

Blackfriars (1km, 13 mins)

Waterloo (1km, 13 mins)

## BY RIVER

River bus services RB1, RB2 and RB6 all stop at Embankment Pier, roughly 600m from Somerset House

