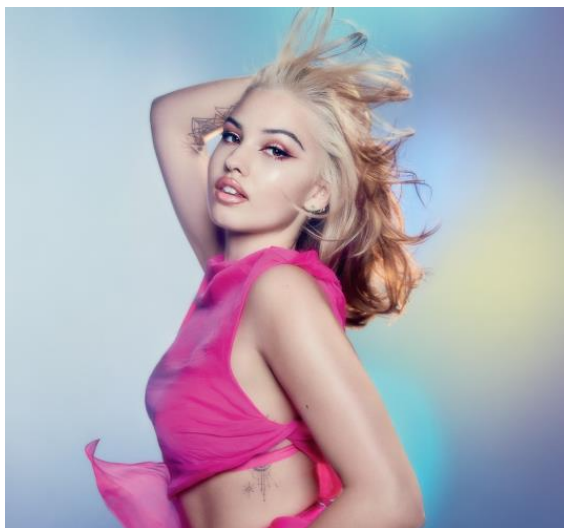


**SOMERSET  
HOUSE**

# **MABEL CONFIRMED TO PERFORM SOMERSET HOUSE SUMMER SERIES WITH AMERICAN EXPRESS ON 17 JULY 2022**



**Download Images of Somerset House Summer Series and headliners [here](#).  
American Express Cardmembers get exclusive access to tickets from 10am on 30 May.  
General tickets go on sale at 10am on 1 June from [www.somerset.org.uk](http://www.somerset.org.uk)**

**Somerset House Summer Series with American Express** are thrilled to announce **Mabel** will be joining the line-up, closing the open-air live music festival on **17 July 2022**.

Mabel has made the perilous jump from box-fresh to bona fide phenomenon strictly on her own terms. From her early promise on the Ivy to Roses mixtape, Mabel has emerged as one of UK pop's most positive, candid and important voices. An extraordinary career arc has seen her veer from playing intimate shows to stadium touring with Harry Styles, selling out her own dates around the world and memorably taking to the Wembley Stadium stage in a Burberry catsuit and rainbow flag. **Crowned Best Female Solo Artist at the BRIT Awards**, she recently scored her **twelfth top 20 hit** in a career that has already surpassed **4.5 billion streams, 8 million singles sold** and **2.5 million adjusted album sales for a debut album**.

A string of platinum selling dance-floor friendly singles has revealed an artist who can create big melodic hooks but who's also unafraid to discuss everything from identity to the challenges of modern relationships, battling anxiety to cultural dislocation.

In between lockdowns, Mabel first teased the single *Let Them Know*, an unapologetic anthem about dressing up with nowhere to go, and projecting confidence for anyone who needs it, while recent single *Good Luck* distilled influences of House, heartbreak and female solidarity into perfectly realised pop.

With her **new album *About Last Night* set for release on 15 July**, just before this special headline show on 17 July, the closing night of Summer Series will be the perfect setting to celebrate Mabel's empowering pop perfection.

# MABEL TO CLOSE SOMERSET HOUSE SUMMER SERIES WITH AMERICAN EXPRESS 2022

17 July 2022

---

An unmissable summer experience, Somerset House Summer Series with American Express brings a vibrant festival atmosphere right to the heart of London, offering music fans the rare opportunity to enjoy world-renowned and emerging acts, across a wide range of diverse and eclectic genres in a spectacular, intimate setting.

Other artists joining the Somerset House Summer Series with American Express line-up this year are **Tems, Squid, Yussef Dayes, Bomba Estéreo, Carly Rae Jepsen, Arlo Parks, black midi, Ghetts, SG Lewis and John Legend.**

## NOTES TO EDITORS

**Dates:** 7-17 July 2022

**Opening Hours:** Door times vary, please check the website for details.

**Address:** Somerset House, Strand, London, WC2R 1LA

**General Admission:** from £27.50

**GA Enhanced Tickets:** from £52.50

The American Express Cardmember presale for Mabel will open at 10am on Monday 30 May 2022 for 48 hours from [somersethouse.org.uk](http://somersethouse.org.uk) and [ticketmaster.co.uk/americanexpress](http://ticketmaster.co.uk/americanexpress)

## ADDITIONAL LISTINGS INFORMATION

**Address:** Somerset House, Strand, London, WC2R 1LA

**Transport:** Underground: Temple, Embankment Rail: Charing Cross, Waterloo, Blackfriars

**Website:** [www.somersethouse.org.uk](http://www.somersethouse.org.uk)

**Somerset House Facebook:**

[www.facebook.com/SomersetHouse](http://www.facebook.com/SomersetHouse)

**Somerset House Twitter:** [@SomersetHouse](https://twitter.com/SomersetHouse)

**Somerset House Instagram:** [@SomersetHouse](https://www.instagram.com/SomersetHouse)

**Hashtag:** #SummerSeriesGigs

**THURSDAY 7 JULY: TEMS - £35.00**

**FRIDAY 8 JULY: SQUID - £27.50**

**SATURDAY 9 JULY: YUSSEF DAYES - £32.50**

**SUNDAY 10 JULY: BOMBA ESTÉREO - £29.50**

**MONDAY 11 JULY: CARLY RAE JEPSEN - £35.00**

**TUESDAY 12 JULY: ARLO PARKS - £30.00**

**WEDNESDAY 13 JULY: BLACK MIDI - £27.50**

**THURSDAY 14 JULY: GHETTS - £30.00**

**FRIDAY 15 JULY: SG LEWIS - £30.00**

**SATURDAY 16 JULY: JOHN LEGEND - £42.50**

**SUNDAY 17 JULY: MABEL - £27.50**

## About Somerset House

*London's working arts centre*

Somerset House is London's working arts centre and home to the UK's largest creative community. Built on historic foundations, we are situated in the very heart of the capital. Dedicated to backing progress, championing openness, nurturing creativity and empowering ideas, our cultural programme is ambitious in scope. We insist on relevance, but aren't afraid of irreverence, and are as keen on entertainment as enrichment. We embrace the biggest issues of our times and are committed to oxygenating new work by emerging artists. Where else can you spend an hour ice-skating while listening to a specially commissioned sound piece by a cutting edge artist?

# MABEL TO CLOSE SOMERSET HOUSE SUMMER SERIES WITH AMERICAN EXPRESS 2022

17 July 2022

---

It is this creative tension – the way we harness our heritage, put the too-often overlooked on our central stage and use our neo-classical backdrop to showcase ground-breaking contemporary culture – that inspires our programme. Old and new, history and disruption, art and entertainment, high-tech and homemade, combined with the fact that we are home to a constantly shape-shifting working creative community: this is our point of difference. It is what we are proud of. And it is what makes the experience of visiting or working in Somerset House inspiring and energizing, urgent and exciting. [SomersetHouse.org.uk](https://www.somersethouse.org.uk)

## About Metropolis Music

Metropolis Music promotes hundreds of shows a year and are committed to working with acts from their inception, helping to build their careers as touring artists in small concert venues through to stadiums. The team covers booking, marketing, ticketing, production and accounting. Metropolis Music is a part of Live Nation Entertainment (NYSE: LYV) which is the world's leading live entertainment company comprised of global market leaders: Ticketmaster, Live Nation Concerts, and Live Nation Media & Sponsorship. For additional information, visit [www.livenationentertainment.com](https://www.livenationentertainment.com).

## About American Express Experiences

American Express connects Cardmembers to the kinds of rewarding experiences and opportunities that matter to them and their businesses. Through American Express Experiences, Cardmembers have access to presale tickets, as well as the best seats and exclusive offers at some of the UK's most sought-after entertainment events via partnerships with a range of entertainment institutions, including Somerset House, AEG, Live Nation, The British Film Institute and the National Theatre. American Express Experiences is just one example of the powerful backing that American Express provides its customers.

## About American Express

American Express is a globally integrated payments company, providing customers with access to products, insights and experiences that enrich lives and build business success. Learn more at [americanexpress.com](https://americanexpress.com) and connect with us on:

[facebook.com/americanexpress](https://facebook.com/americanexpress), [instagram.com/americanexpress](https://instagram.com/americanexpress), [linkedin.com/company/american-express](https://linkedin.com/company/american-express), [twitter.com/americanexpress](https://twitter.com/americanexpress), and [youtube.com/americanexpress](https://youtube.com/americanexpress).

Key links to products, services and corporate responsibility information: [Charge and Credit Cards](#), [Business Credit Cards](#), [Travel Services](#), [Gift Cards](#), [Prepaid Cards](#), [Merchant Services](#), [Accertify](#), [InAuth](#), [Corporate Card](#), [Business Travel](#), and [Corporate Responsibility](#).

## FOR SUMMER SERIES PRESS ENQUIRIES, PLEASE CONTACT:

Julie Bland, Managing Director at Family PR  
[juliebland@familypr.co.uk](mailto:juliebland@familypr.co.uk) // 07767 784 640